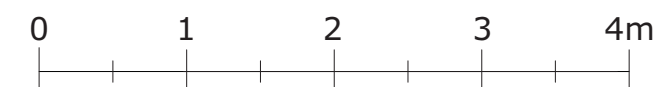
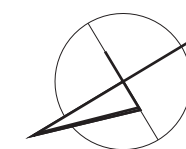
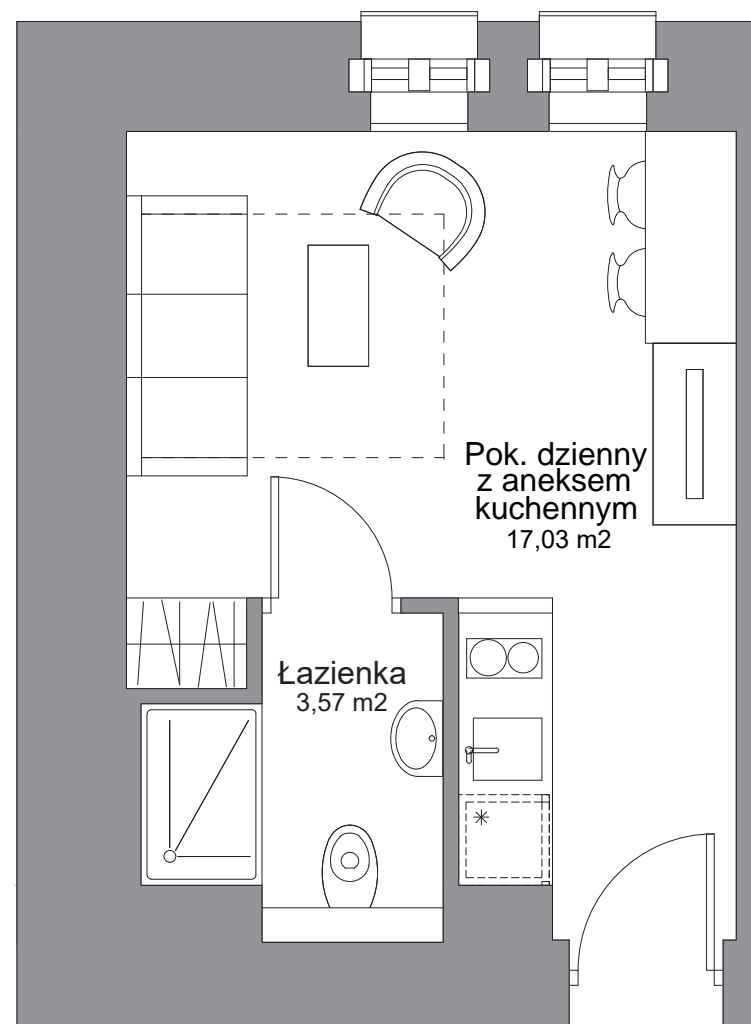




WATERLANE VINTAGE

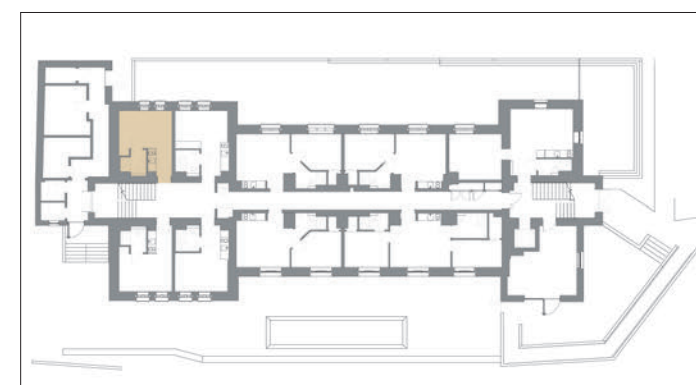
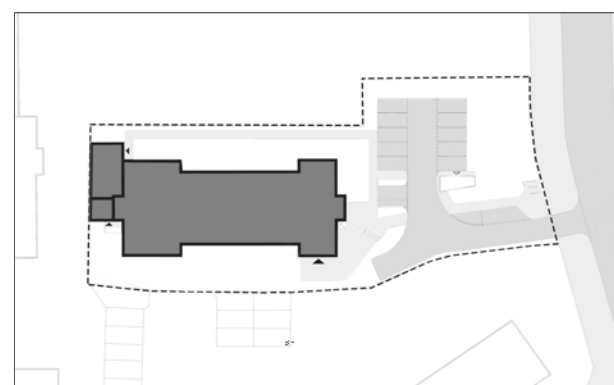


Inwestor:



Member of LP Group

LP Wałowa sp. z o.o.
Stągiewna 19/2
80-750 Gdańsk



Apartament	nr 05
piętro	0
ilość pokoi	1
pow. użytkowa netto (Pu)	20,60 m ²
pow. wewnętrzna (Pw)	21,05 m ²