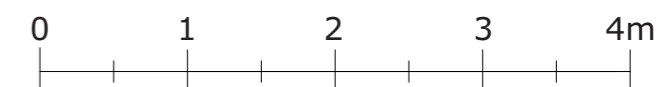
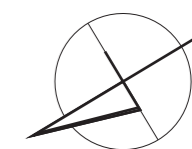
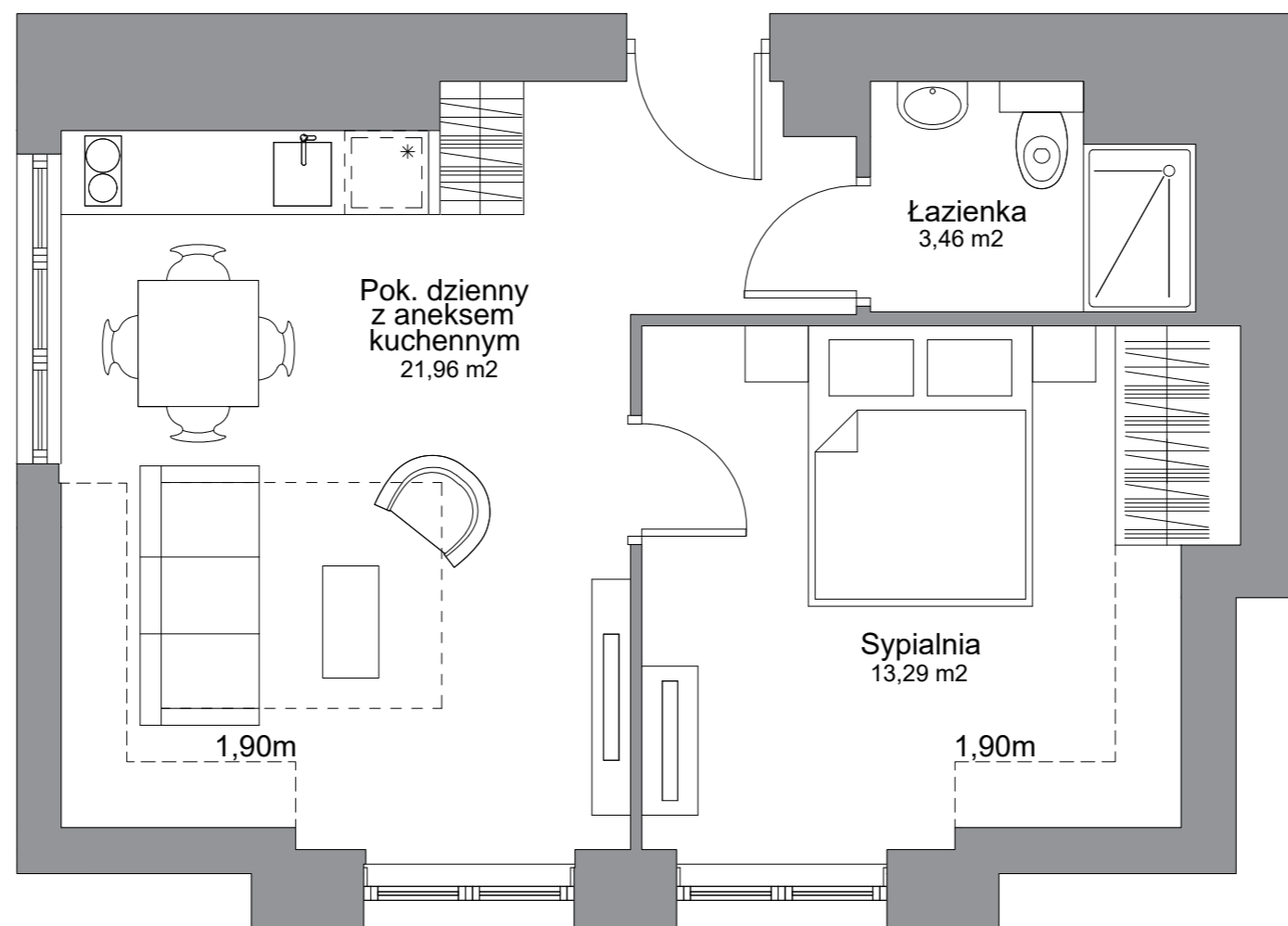




WATERLANE VINTAGE

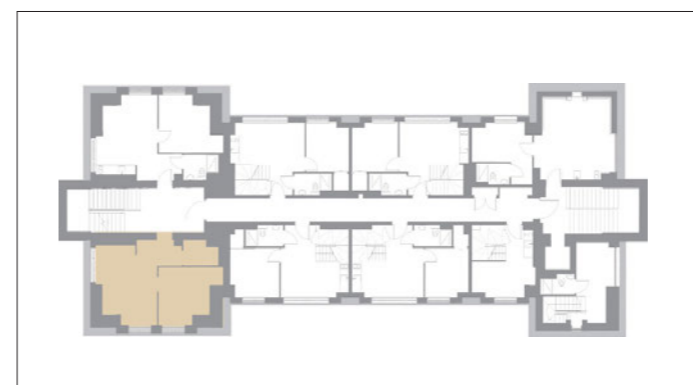
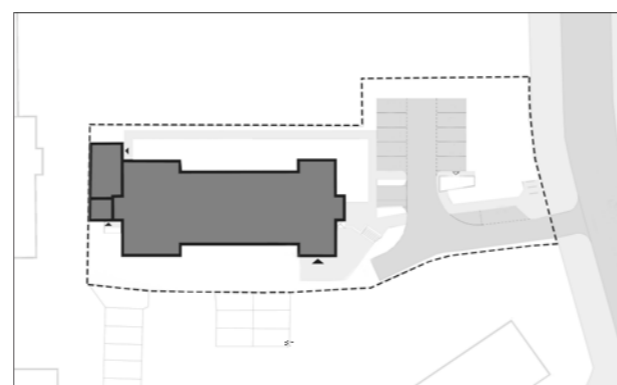


Inwestor:



Member of LP Group

LP Wałowa sp. z o.o.
Stągiewna 19/2
80-750 Gdańsk



Apartament	nr 43
piętro	4
ilość pokoi	2
pow. użytkowa netto (Pu)	38,71 m ²
pow. wewnętrzna (Pw)	39,55 m ²