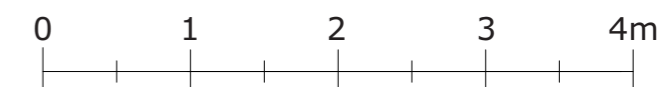
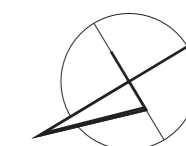
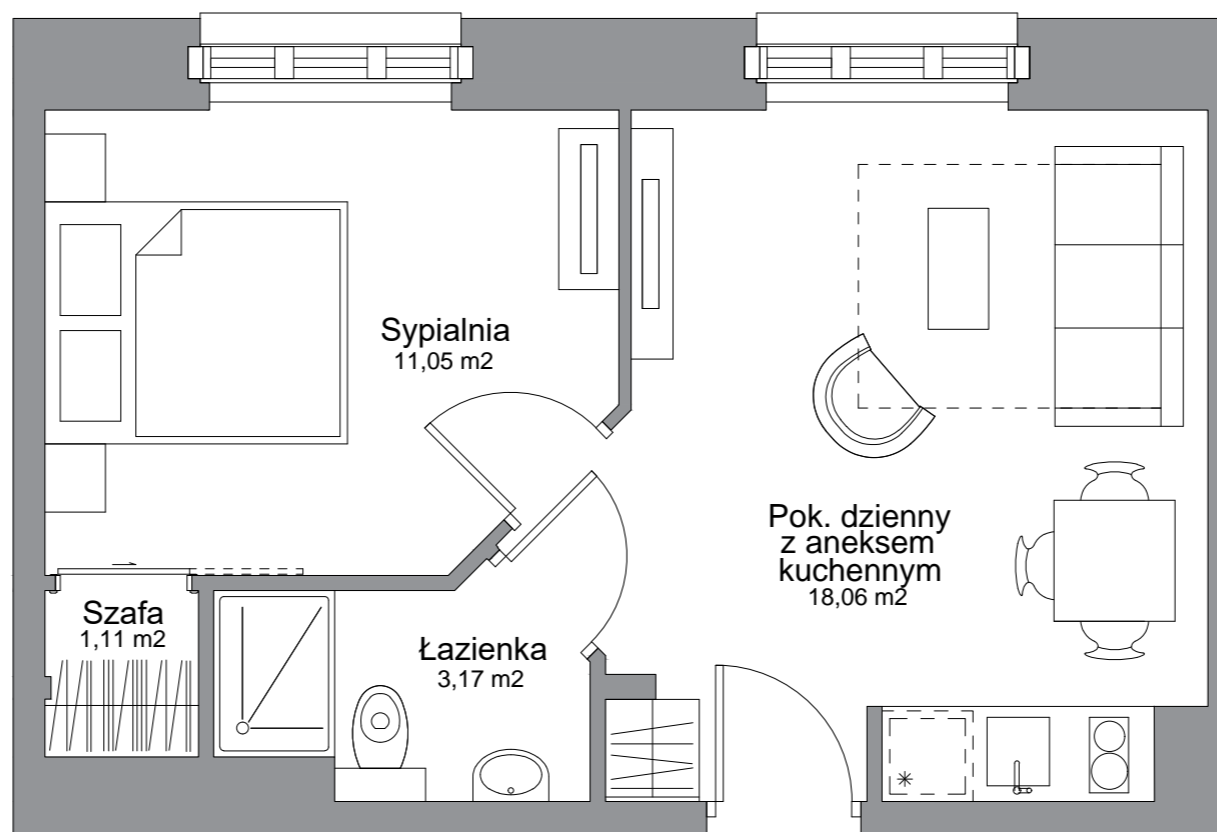




# WATERLANE VINTAGE

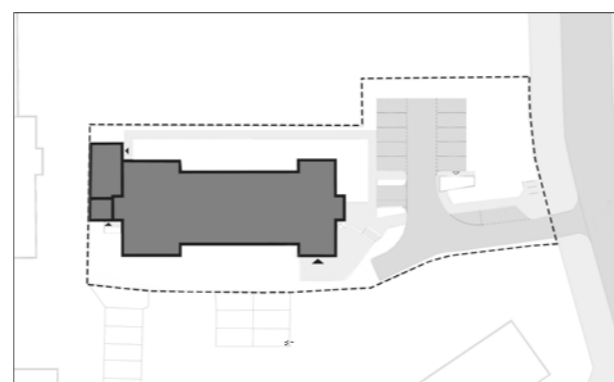


Inwestor:



Member of LP Group

LP Wałowa sp. z o.o  
Stągiewna 19/2  
80-750 Gdańsk



<b>Apartament</b>	<b>nr 28</b>
piętro	2
ilość pokoi	2
pow. użytkowa netto (Pu)	33,39 m <sup>2</sup>
pow. wewnętrzna (Pw)	33,82 m <sup>2</sup>