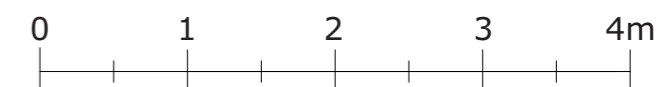
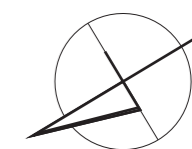
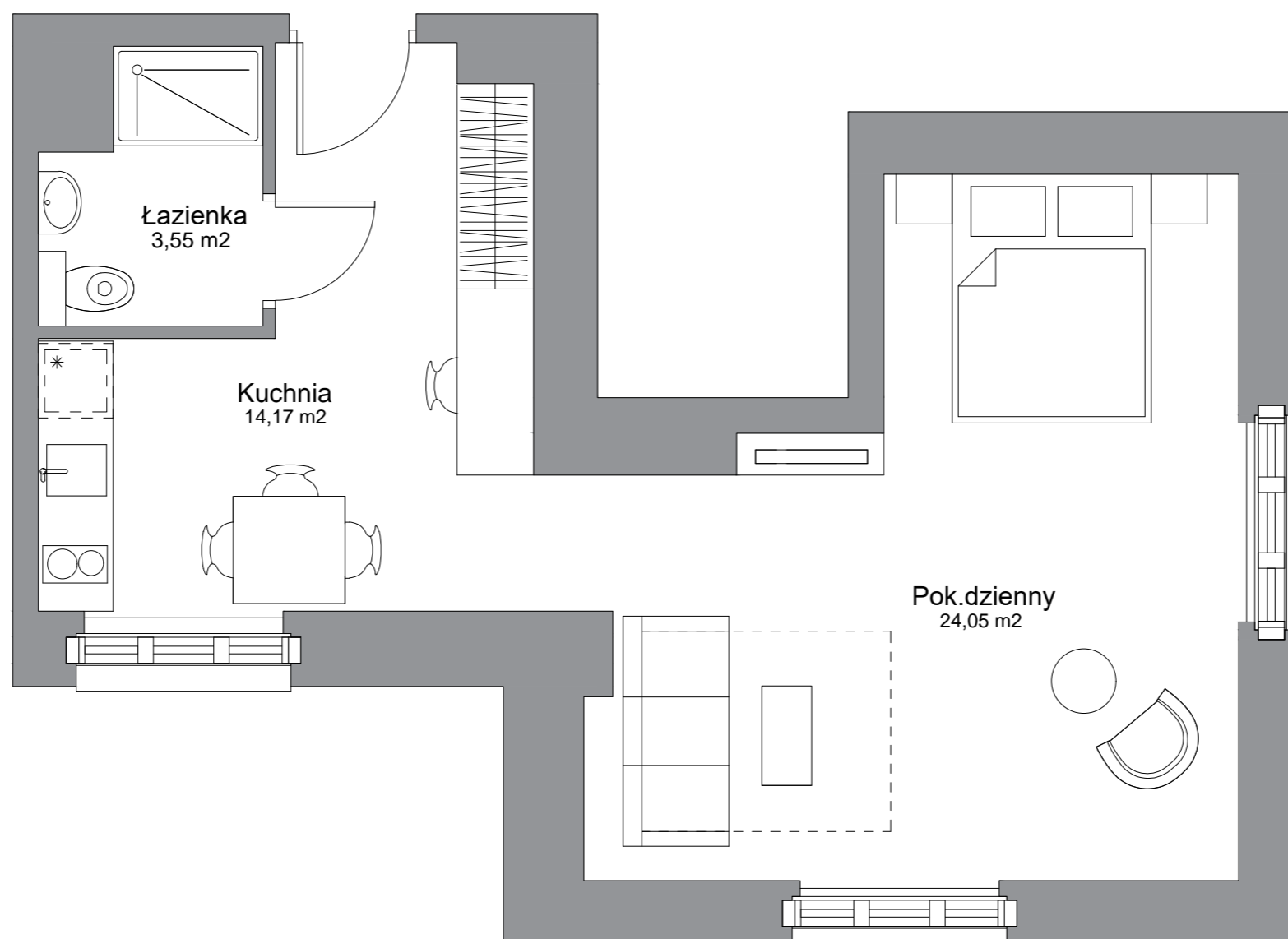




# WATERLANE VINTAGE

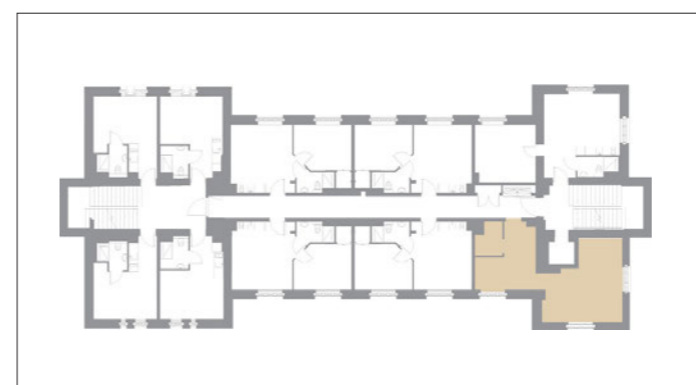
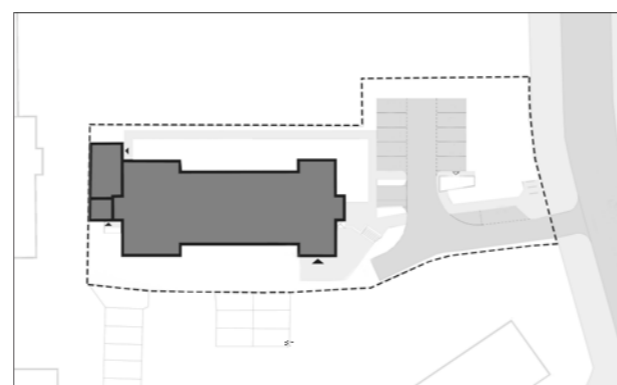


Inwestor:



Member of LP Group

LP Wałowa sp. z o.o.  
Stągiewna 19/2  
80-750 Gdańsk



<b>Apartament</b>	<b>nr 20</b>
piętro	2
ilość pokoi	1
pow. użytkowa netto (Pu)	41,77 m <sup>2</sup>
pow. wewnętrzna (Pw)	42,19 m <sup>2</sup>