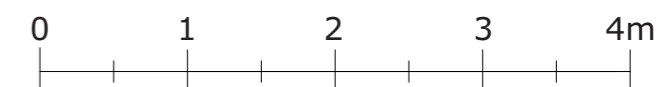
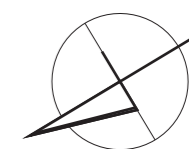
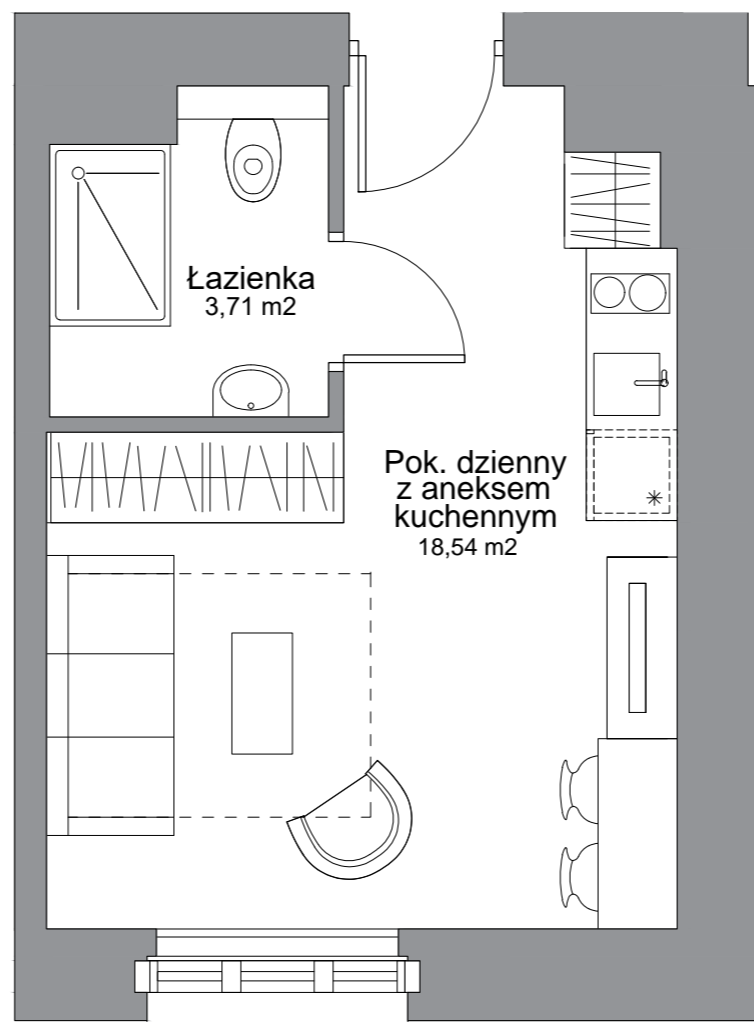




WATERLANE VINTAGE

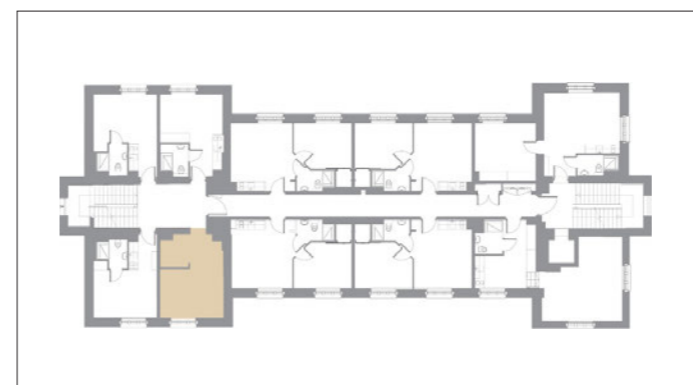
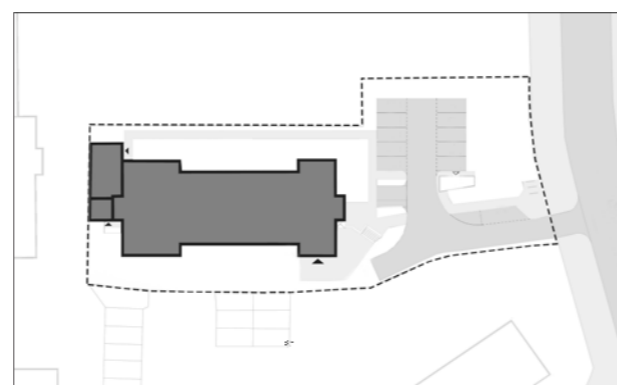


Inwestor:



Member of LP Group

LP Wałowa sp. z o.o
Stągiewna 19/2
80-750 Gdańsk



| | |
|--------------------------|----------------------|
| Apartament | nr 13 |
| piętro | 1 |
| ilość pokoi | 1 |
| pow. użytkowa netto (Pu) | 22,25 m ² |
| pow. wewnętrzna (Pw) | 22,66 m ² |