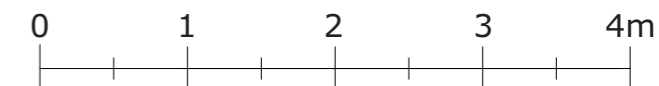
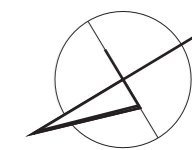
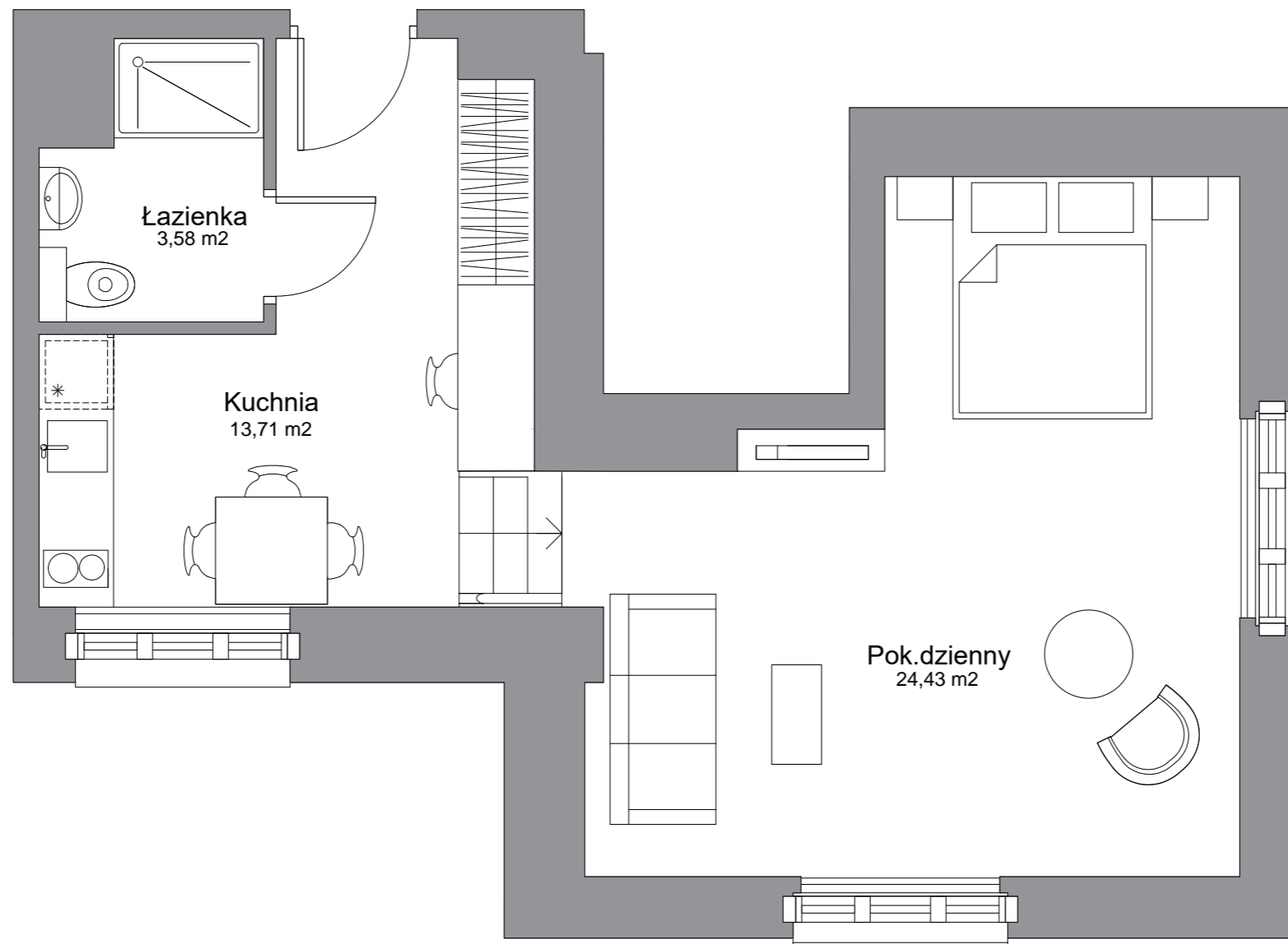




WATERLANE VINTAGE

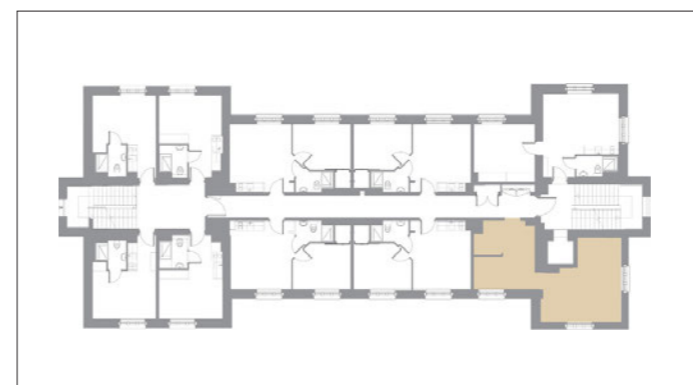
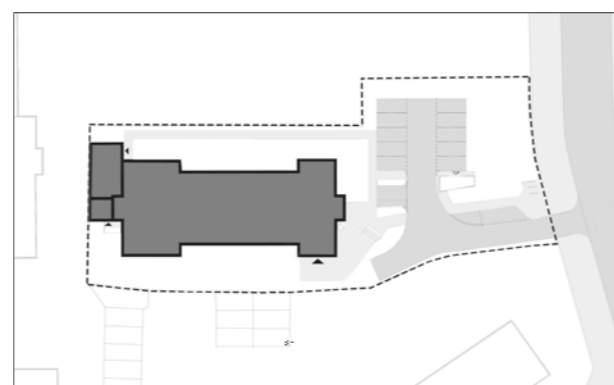


Inwestor:



Member of LP Group

LP Wałowa sp. z o.o
Stągiewna 19/2
80-750 Gdańsk



| | |
|--------------------------|----------------------|
| Apartament | nr 10 |
| piętro | 1 |
| ilość pokoi | 1 |
| pow. użytkowa netto (Pu) | 41,72 m ² |
| pow. wewnętrzna (Pw) | 42,15 m ² |